

# TROI-8800 CI SERIES

Conformal Coating Inspection System

Coating Inline Inspection & Thickness Inspection



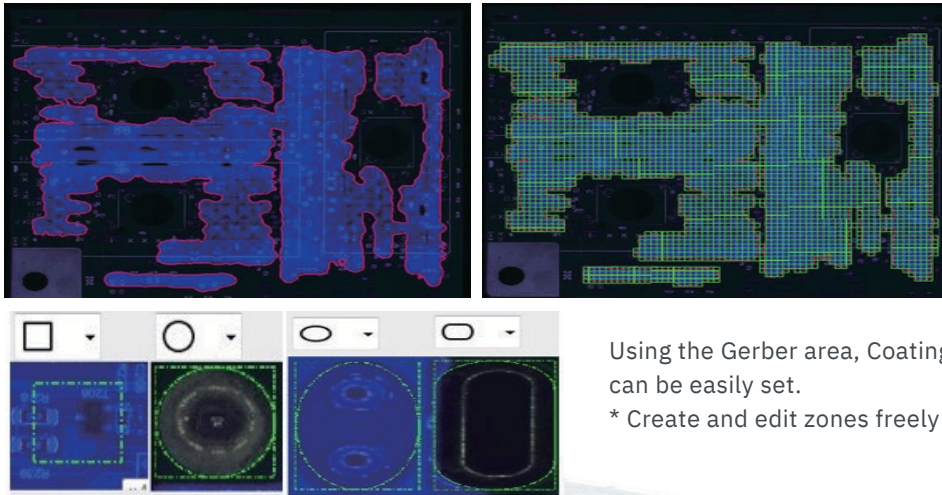
## TECHNOLOGY AND FEATURES

Advanced High Speed Inspection and Measurement Technology

## COATING INLINE INSPECTION

Auto Teaching & Debug & Multi Part Registration Available

- Automatically create programs using Pemtron's specialized Auto Teaching capabilities.
- Debug Mode automatically provides user convenience with inspection criteria.
- Manual Mode provides user intuitive UI screen which can easily set detailed setting.

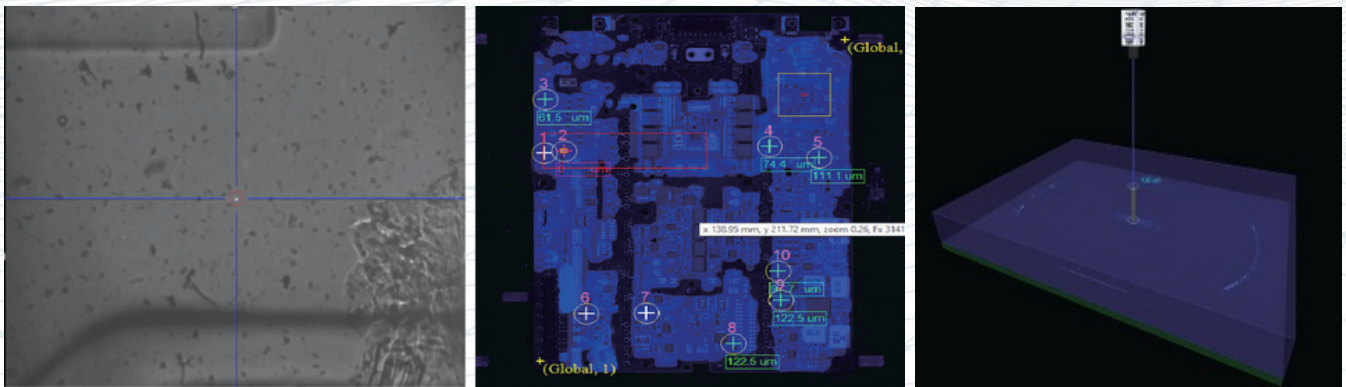


Using the Gerber area, Coating, Non-Coating, Ignore, etc. can be easily set.

\* Create and edit zones freely without Gerber)

## THICKNESS INSPECTION

Can measure coating thickness of submicron unit precision using light wavelength spectroscopy.



## SIDE CAMERA INSPECTION

- 4-Way Side Camera
- Side inspection not visible on Top side camera.

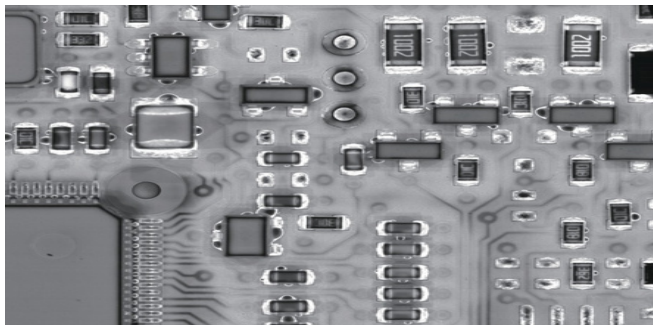




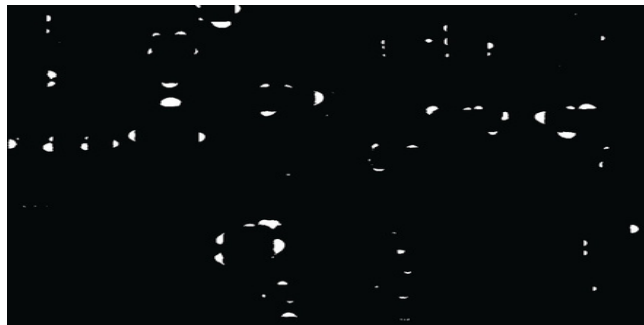


## BUBBLE INSPECTION (AI DEEP LEARNING)

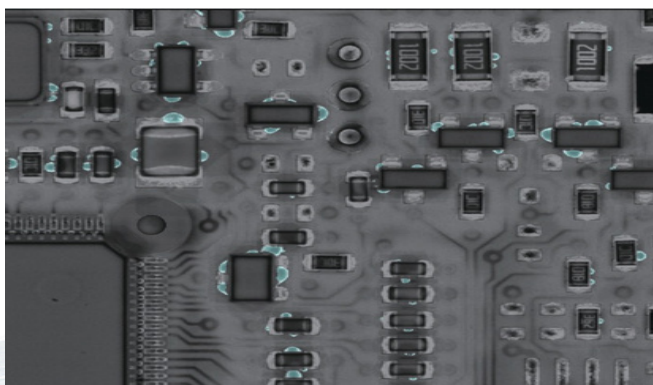
Applied Pemtron's self-developed AI engine Pembrain.  
Inspection of Bubble inside the coating.



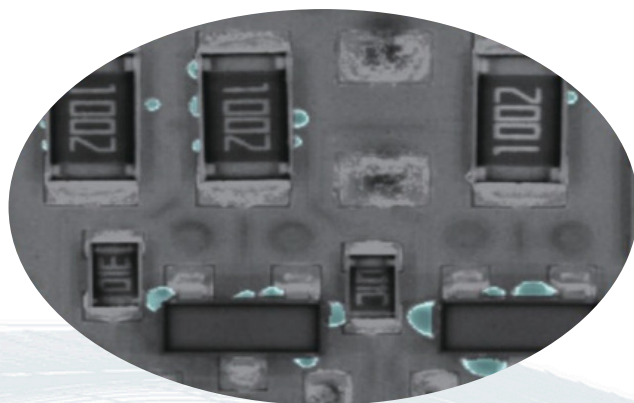
Bubble Inspection



Binary Processing



Inspection Result



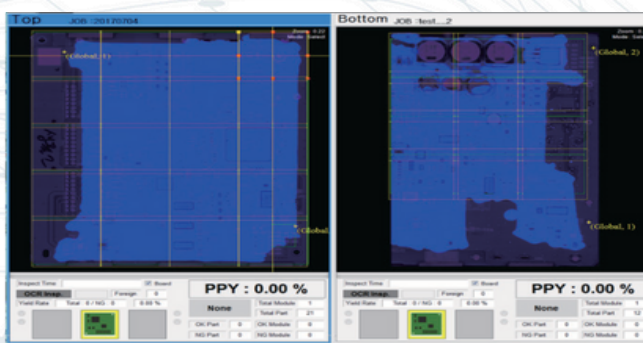
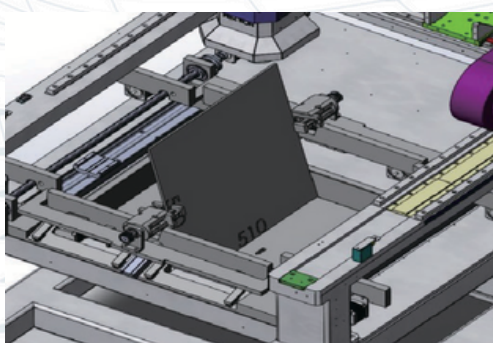
\*Bubbles are displayed in separate colors

## LINKAGE

Linkage among Pemtron SPI - AOI - CI, ETC  
Remote control and real-time history verification through SMARTRON™ function.

## BOTH SIDES INSPECTION USING REVERSE MODULE

Automatically and quickly check both sides of the PCB by providing a reverse option inside the facility.



# SPECIFICATIONS

Model		TROI-8800 CI					
Camera		4MP			10MP		
X/Y Pixel Resolution		10um	15um	18um	10um	15um	18um
FOV (Field Of View)		20x20mm	30x30mm	36x36m	32x30mm	49x45mm	59x54mm
Inspect Speed		16cm <sup>2</sup> /s	36cm <sup>2</sup> /s	53.5cm <sup>2</sup> /s	32cm <sup>2</sup> /s	72cm <sup>2</sup> /s	102.6cm <sup>2</sup> /s
Lens Type		Telecentric					
Board Dimension							
PCB Specification	Working Area	Min. 50 x 50mm (2 x 2inch)   Max. 470 x 510mm (19 x 20inch)					
	Coating Thickness Measure (Option)	Min. 50 x 50mm (2 x 2inch)   Max. 400 x 380mm (16 x 15inch)					
	Thickness	0.4 ~ 7.0mm					
	Top Clearance	80mm					
	Bottom Clearance	80mm					
System							
Installation Requirement	Electrical Requirements	200-240VAC, 50/60Hz					
	Air Requirement	5 Kgf/ cm <sup>2</sup>					
	Power Consumption Standard type	2.4kW (10A Max @ 220V AC)					
Control Unit	Control Method	PC Based Control (Windows 10, 64bit)					
	Monitor	24" LED Panel					
Operating	Operating Temperature	20 - 30 °C (68 - 86 °F)					
Dimension (W x D x H)		1100 x 1290 x 1550mm (43 x 51 x 61inch)					
Weight		850kg (1874lb)					

\* Specifications subject to change without notice.



## OSDEMS INDUSTRIAL

Address: Blvd. Puerta de Hierro 5153, Fracc.  
Plaza Andares. Zapopan, Jalisco 45116 Piso 2

Tel.: +52 33 1174 4584  
+52 33 1691 1593

Mail: sales@osdemsindustrial.com

Website: www.osdemsindustrial.com

