

X-Ray Automatic Counter

# MERCURY6



## TECHNOLOGY AND FEATURES

### Artificial Intelligence (AI) Inspection Method

- Inspection method through artificial intelligence (AI) learning
- Use immediately after installation without a separate parameter input process

### Accurate and High-Speed Inspection

- Available from 0201 small components to large components such as connectors
- Simultaneous inspection by automatically recognizing 1 to 4 7-inch reels
- Inspection proceeds by automatically recognizing up to 17-inch reel
- Realize high-speed inspection by applying high-end GPU (1~4 seconds depending on the type and quantity of components)

### User-Friendliness

- Applied intuitive and easy GUI configuration and multi-touch monitor
- Hand scanner and label printer interface
- MES/ERP support
- User label editing function

### Automatic Barcode Recognition Function (Option)

- A system that automatically recognizes the barcodes attached to products
- Provides a feature to distinguish and recognize only the pre-specified types of barcodes

### Operation Error Prevention Function (Patent)

- Automatically detects the reel in and out positions through the reel detection sensor
- When the code is scanned, the position of the reel is automatically linked with the label printer and MES

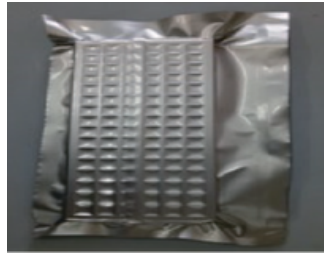


## Reliable Inspection of Various Components

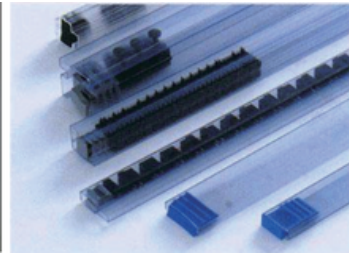
- Reel vacuum-packed (with desiccant)
- Tube packing, Tray packing component
- High height component
- Component in bulk (individual) state



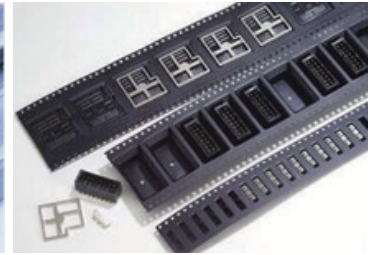
Vacuum-Packed Reel with Desiccant



Tray Packing

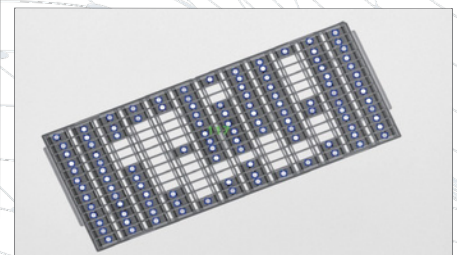
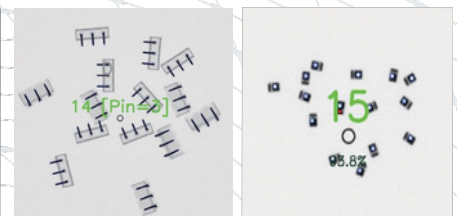
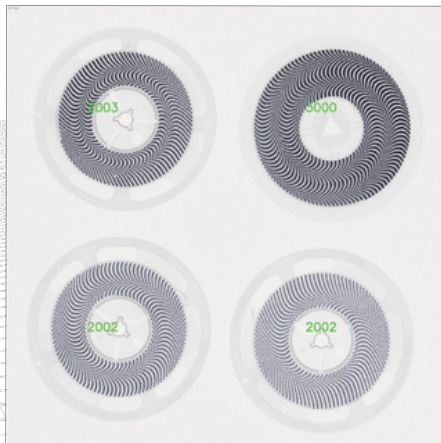


Tube Packing



High Height Component

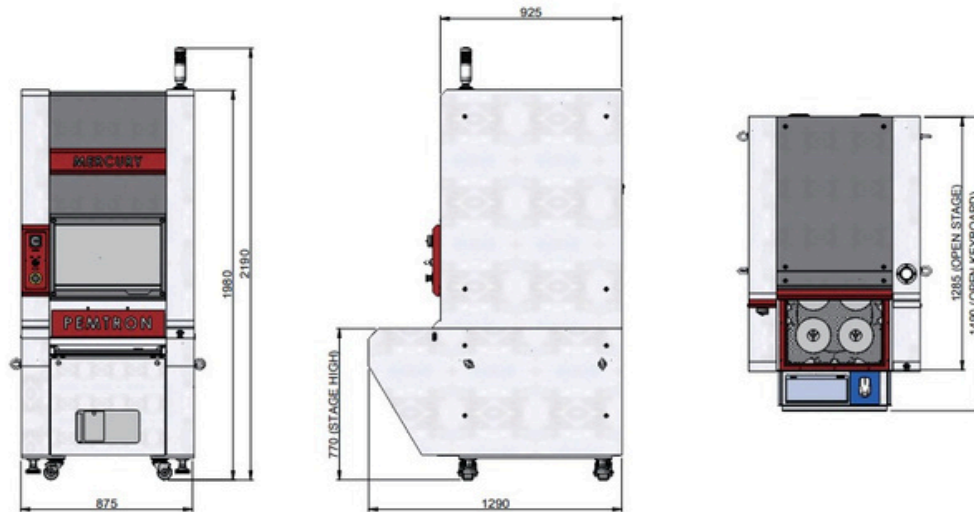
## Examples of Actual Test Results



# SPECIFICATIONS

Model	MERCURY6
Reel Size	Single Reel : up to 17" / Four Reel : 4 x 7" Height : 100mm Weight : 10kg
Accuracy	>99.9%
X-ray	65kV/45.5W
Detector	17"x17" FPD
PC	Windows 10 Professional / Touch Monitor
Power	220V 50/60Hz Single Phase
Etc.	Hand-Held Scanner
Option	Label Printer, Auto Scanner

\* Specifications subject to change without notice.



## OSDEMS INDUSTRIAL

Address: Blvd. Puerta de Hierro 5153, Fracc.  
Plaza Andares. Zapopan, Jalisco 45116 Piso 2

Tel.: +52 33 1174 4584  
+52 33 1691 1593

Mail: [sales@osdemsindustrial.com](mailto:sales@osdemsindustrial.com)

Website: [www.osdemsindustrial.com](http://www.osdemsindustrial.com)

